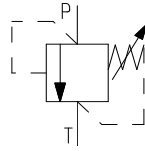




## CHARACTERISTICS

### 1. General

Symbol



Type	designation seat valve
Weight	0,4 kg ( valve ); 1.3 kg ( housing )
Mounting position	any
Direction of volume flow	P to T
Ambient temperature	-25°C to +90°C

### 2. Hydraulic characteristics

Operating pressure range	0 - 315 bar
Setting pressure range	7 - 70 bar; 7 - 140 bar; 7 - 210 bar; 7 - 315 bar
Rated flow	at rated flow 25 dm <sup>3</sup> /min to 210 bar 16 dm <sup>3</sup> /min to 315 bar
Maximum flow approx.	40 dm <sup>3</sup> /min
Rotation of angle approx.	5400° ( spindle rotations )
Actuating torque	0,7 Nm
Hydraulic fluid	hydraulic oil according to DIN 51 524 ( 1,2 )
Hydraulic fluid	temperature range -20°C to +8 0°C
Viscosity range	5 - 350 mm <sup>2</sup> /sec.
Dampening behaviour	hydrostatic

## CHARACTERISTICS

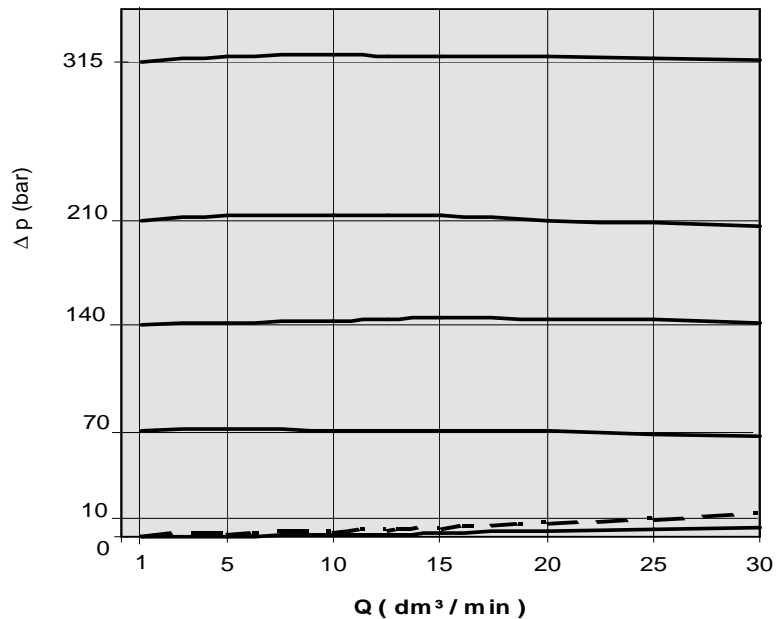
### Δ p-Q-characteristics;

for opening / closing process

Measured at an oil viscosity of 36 mm<sup>2</sup>/S

————— for model up to 210 bar

- - - - - for model up to 315 bar



For applications in excess of the given specifications, please contact Schiedrum.

All data given should be used as description for the product only and they are not to understand as warranty ( zugesicherte Eigenschaften ) in the sense of law.