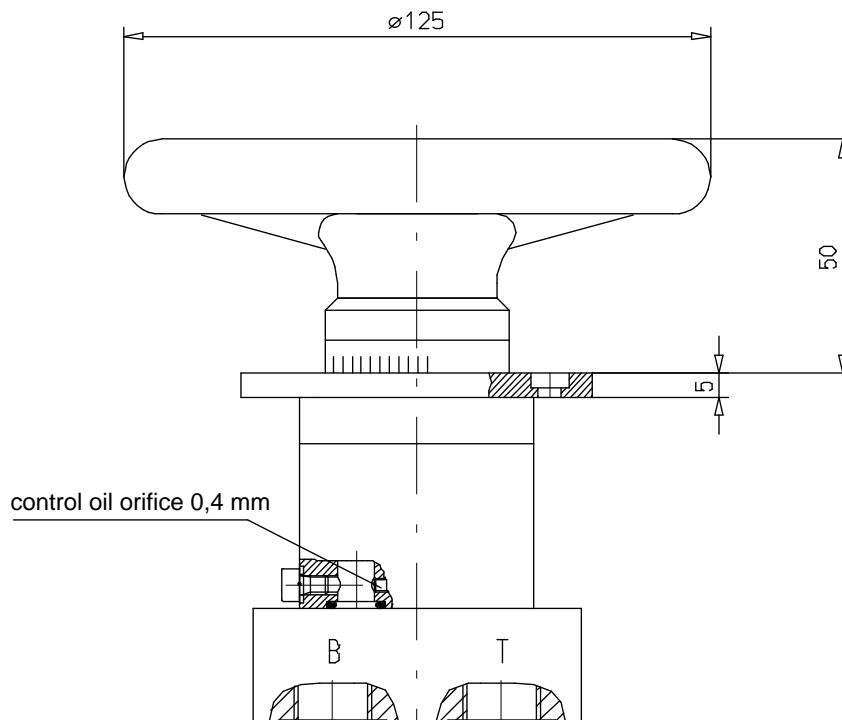


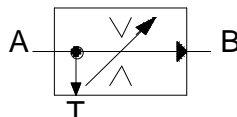
The detailed description of the valve and the dimensions may be missing the main prospectus  
Type 31 D removed.



## Characteristics

### 1.General

Symbol



Design

Adjustment throttle: flat rotary valve with triangular notch, orifice design  
Differential pressure valve  
pressure balance: switched in parallel with the adjustment throttle

Mounting position

any

Direction of volume flow

A to B controlled; A to T unthrottled return flow

Ambient temperature range

-25°C to +80°C

Hydraulic fluid

Hydraulic oil according to DIN 51 524 (1,2), for other media contact Schiedrum

### 2.Hydraulic characteristics

Set pressure range

Pressure stage N = 5 - 100 bar; H = 5 - 210; 3H = 5 - 315 bar; 4H = 5 - 450 bar

Rated volume flow

1,0 - 1,6 - 2,5 - 4,0 - 6,3 - 10 - 16 L / min.

Contamination level/filtering

General permit table class 18/15 according to ISO 4406 or 9 according  
NAS 1638 (recommended filter: min. retaining rate  $\beta_{10-15} \geq 75$ )

Viscosity range

5 - 350 mm<sup>2</sup>/sec

### ORDER

Name

**3-Way flow control valve 31 C 16 H 4 M68**

**Type series**

**Series code letter**

**Rated volume flow:** in l/min 1; 1.6; 2.5; 4.0; 6.3; 10; 16

**Pressure stage:** N = up to 100 bar; H = up to 210 bar

3H = up to 315 bar; 4H = up to 450 bar

**Connector size:** 2 = G 1/4; 3 = G 3/8; 4 = G 1/2

**special edition M 68**